

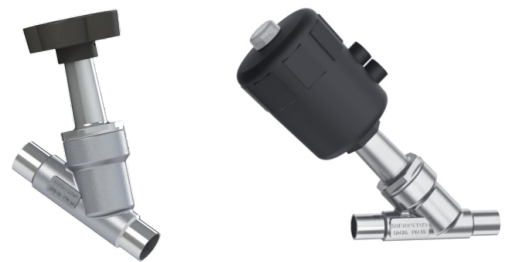
**SING-TAO**

## **SANITARY ANGLE SEAT VALVE**

---

---

**Sterile, Aseptic and Sanitary Valves**



[www.sing-tao.com.cn](http://www.sing-tao.com.cn)

# SING-TAO

Initiated by Dr. Dave Schmidt, a valve control expert, the innovation team is formed by the industry elites from Germany, Belgium and Hungary to jointly explore the wonderful pleasure of fluid control technology. We have successively established production factories in Malaysia and Indonesia, where there are rich mineral resources. With the help of Singapore's mature international trade market position, we have established a supply system integrating research and development, casting, processing and marketing.

We prefer to provide fluid control valves made of stainless steel and corrosion-resistant materials for applications in drinks, drugs and electronic semiconductor fields, including electric, pneumatic and manual valves: Steam drain valve, diaphragm valve, spherical valve, flap valve, mix-proof valve, check valve, angle stop valve, pipeline pressure maintaining valve, etc. We have full-time research and development engineers who conduct continuous improvement to every valve type, so that the products can better match the process requirements.

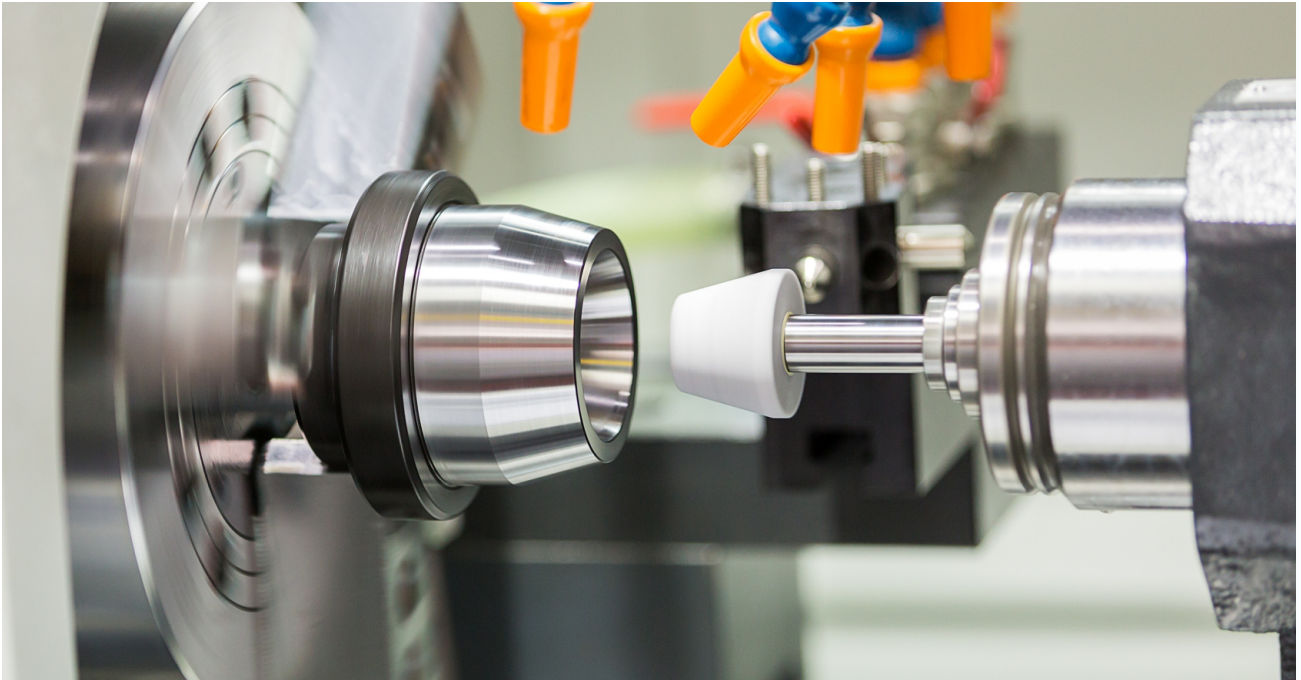
We always ensure that our products meet international industry standards and professional guidelines in quality control and best practices, including 3A, ASME BPE, FDA and SGS. Thanks to our continued commitment to product quality, we have been actively involved in EHEDG and FPSA, who have helped us become a leading valve supplier in the fluid control industry with their knowledge. For example: In order to reduce the risk of microbial contamination, we defined the structure and connection form of diaphragm valves used for cross-materials. The large flux check valve and plunger sterile tank bottom valve, etc. are designed ingeniously, becoming the industry leader.

Taking the Free Trade Agreement Upgrade Protocol signed between Singapore and China as the opportunity, we received the invitation to officially set up China's first "SING-TAO" valve representative office in the Singapore Industrial Park in Suzhou, China in 2022, to serve the Chinese market as the world's second largest economy, which will be the most important milestone in promoting the brand globalization of "SING-TAO" valve.



## **ENTERPRISE VISION**

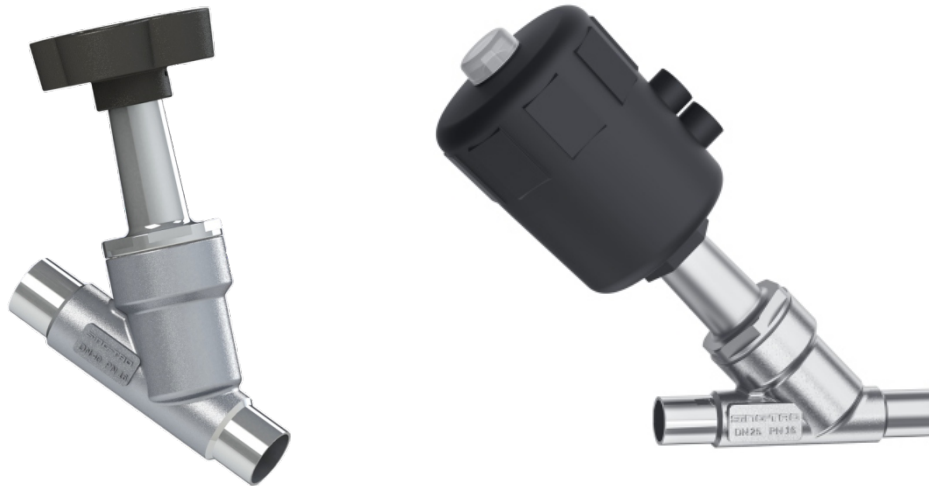
Let the experience exceed expectations



## **TRACEABILITY OF PRODUCTS**

Each SING-TAO product is labeled with the brand name, material, dimension and traceable product number. Such information and customer purchase records are well documented and tracked in our system.

## SANITARY ANGLE SEAT VALVE

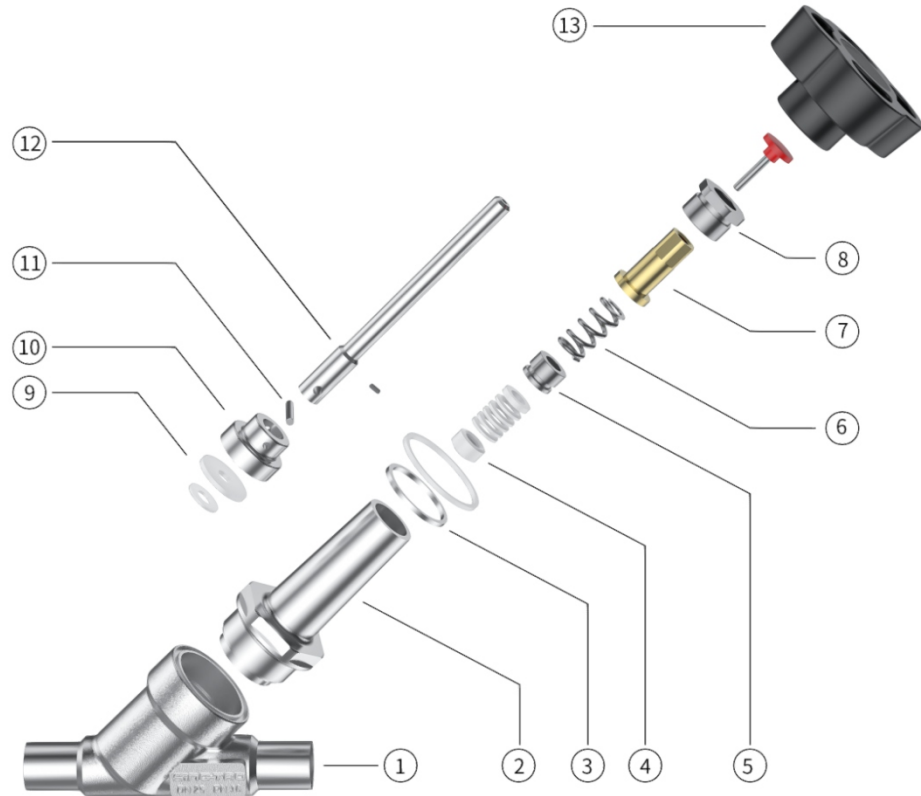


**Application:** The angle seat valve of Sing-Tao is designed according to ASMEBPE standard, and is mainly used in food and beverage, brewing, biopharmaceuticals and other fields.

**Features:** Large flow, high pressure resistance, more economy, maintenance-free, easy installation and low energy consumption, so it is very suitable for high-frequency pneumatic operation in a short time. Sensitive response, accurate action, can be used with solenoid valve or positioner, and has the functions of accurate flow regulation. For example, the application of angle seat valve in hot and humid sterilization cabinet can realize the precise control of steam flow.

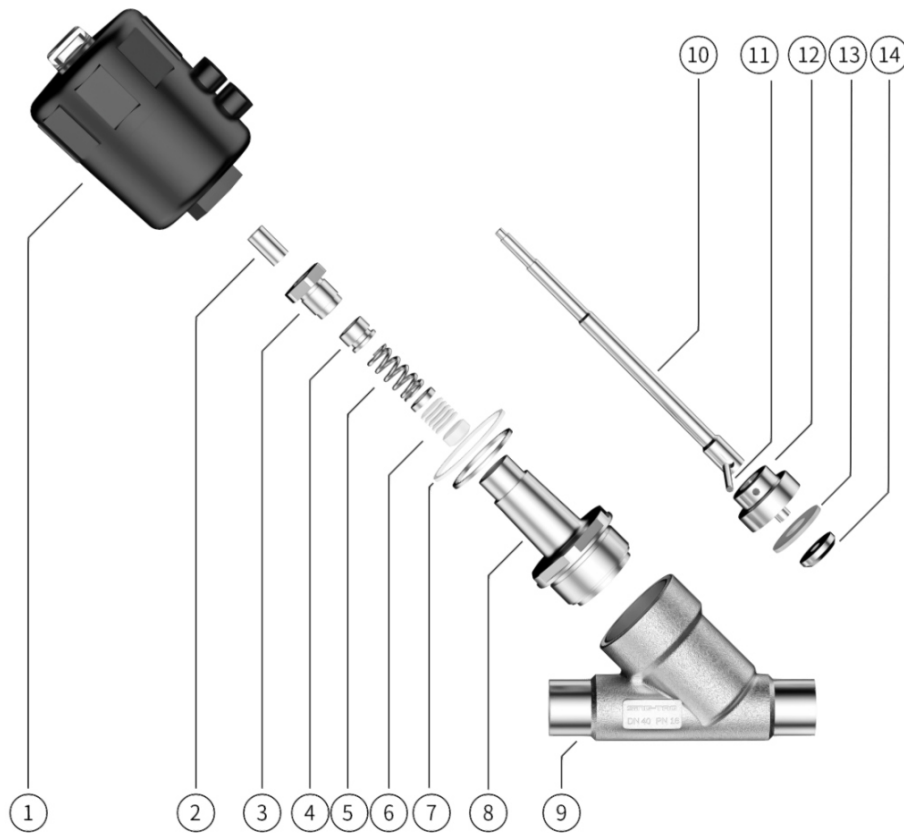
Dimension range: DN15-DN65(0.5"-2.5")	Seat material: PTFE
Working temperature: -20°C-180°C	Body material: 304/316L
Pressure rating: 16bar	Interface form: Welding and clamping
Driving mode: Manual/pneumatic	Standard: Comply with EHEDG, TS and CE certification
Automatic control unit: feedback device, positioning device	

## Sing-Tao Series-8 Sanitary Angle Seat Valve



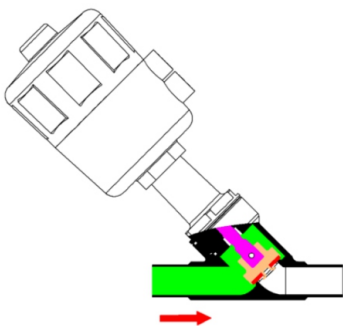
Manual angle seat valve		
No.	Description	Material (EN)
1	Valve body	A351 CF8/CF3M
2	Valve cover	A276304/316L
3	Sealing gasket	PTFE
4	Stem seal assembly	PTFE
5	Seal sleeve	A276304/316L
6	Spring	SS304
7	Valve rod nut	T3
8	Nut gland	A276304/316L
9	Seat	PTFE
10	Valve clack	A276304/316L
11	Pin	SS304/316L

## Sing-Tao Series-8 Sanitary Angle Seat Valve

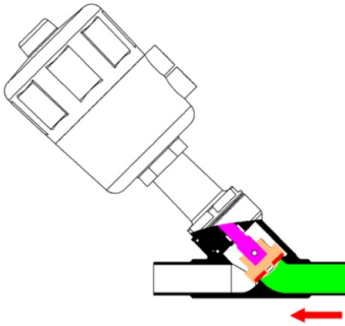


Pneumatic angle seat valve		
No.	Description	Material (EN)
1	Pneumatic actuator	NYLON component
2	Oil-free bearing	SS 304+PTFE
3	Gland	A276304/316L
4	Seal sleeve	A276304/316L
5	Spring	A276304
6	Stem seal assembly	PTFE
7	Sealing gasket	PTFE
8	Valve cover	A276304/316L
9	Valve body	A351 CF8/CF3M
10	Valve stem	A182F304/F316L
11	Pin	S5304/316L
12	Valve clack	A276304/316L
13	Seat	PTFE
14	Gland nut	A276304/316L

**Rated Pressure-temperature Values**



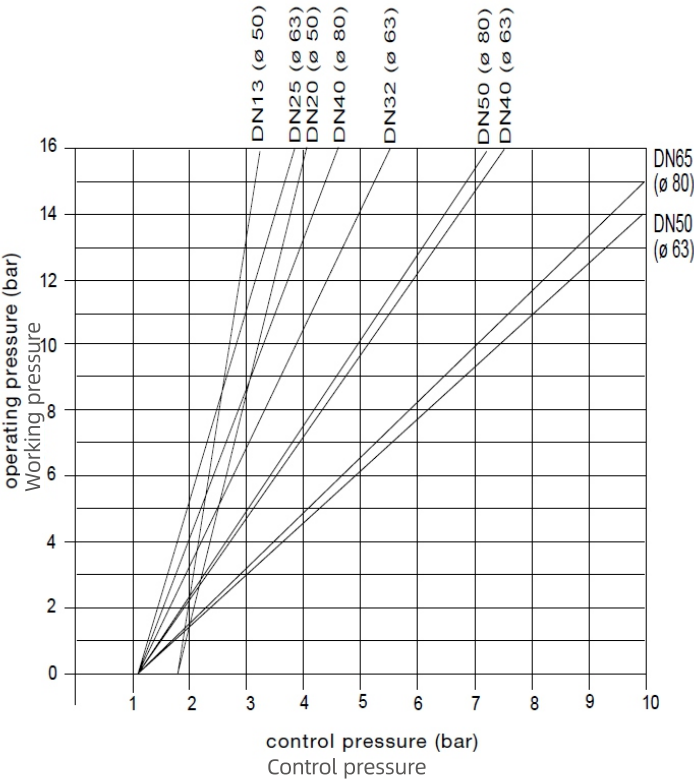
High-inlet and low-outlet- ordinary type



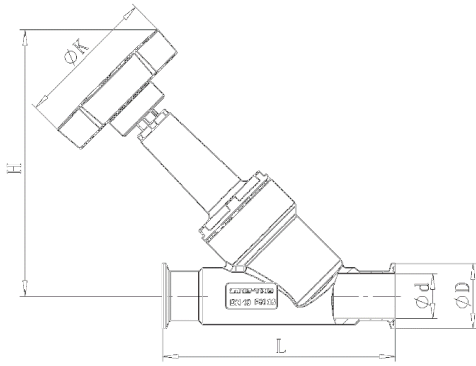
Low-inlet and high-outlet - waterproof hammer

Control function B  
Control function

Actuator 50 - 80 mm  
Executing agency

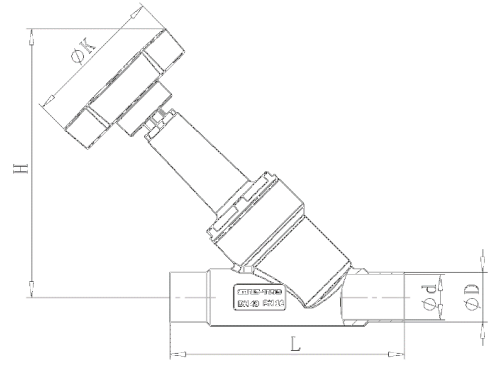


**Dimension table of angle seat valve**



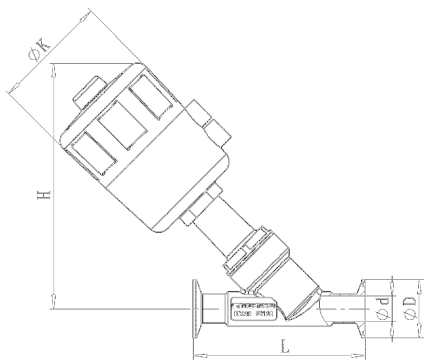
Manual clamping type - ASME BPE

Size	d	D	L	K	H
1/2"	9.4	25	120	85	65
3/4"	15.8	25	130	85	69
1"	22.1	34/50.4	140	85	86
1 1/2"	34.8	50.4	150	110	110
2"	47.5	63.9	180	110	120
2 1/2"	60.2	77.4	195	130	152



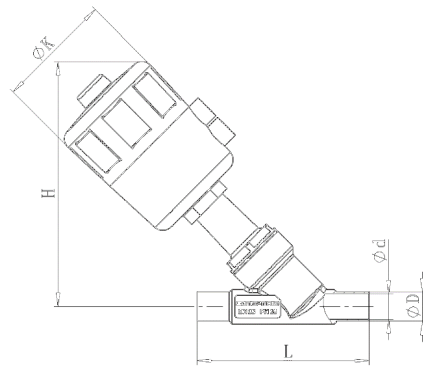
Manual welding type - ASME BPE

Size	d	D	L	K	H
1/2"	9.4	12.7	120	85	65
3/4"	15.8	19.05	130	85	69
1"	22.1	25.4	140	85	86
1 1/2"	34.8	38.1	150	110	110
2"	47.5	50.8	180	110	120
2 1/2"	60.2	63.5	195	130	152



Pneumatic clamp type - ASME BPE

Size	d	D	L	K	H
1/2"	9.4	25	120	50	145
3/4"	15.8	25	130	50	150
1"	22.1	34/50.4	140	63	180
1 1/2"	34.8	50.4	150	80	190
2"	47.5	63.9	180	100	220
2 1/2"	60.2	77.4	195	100	250

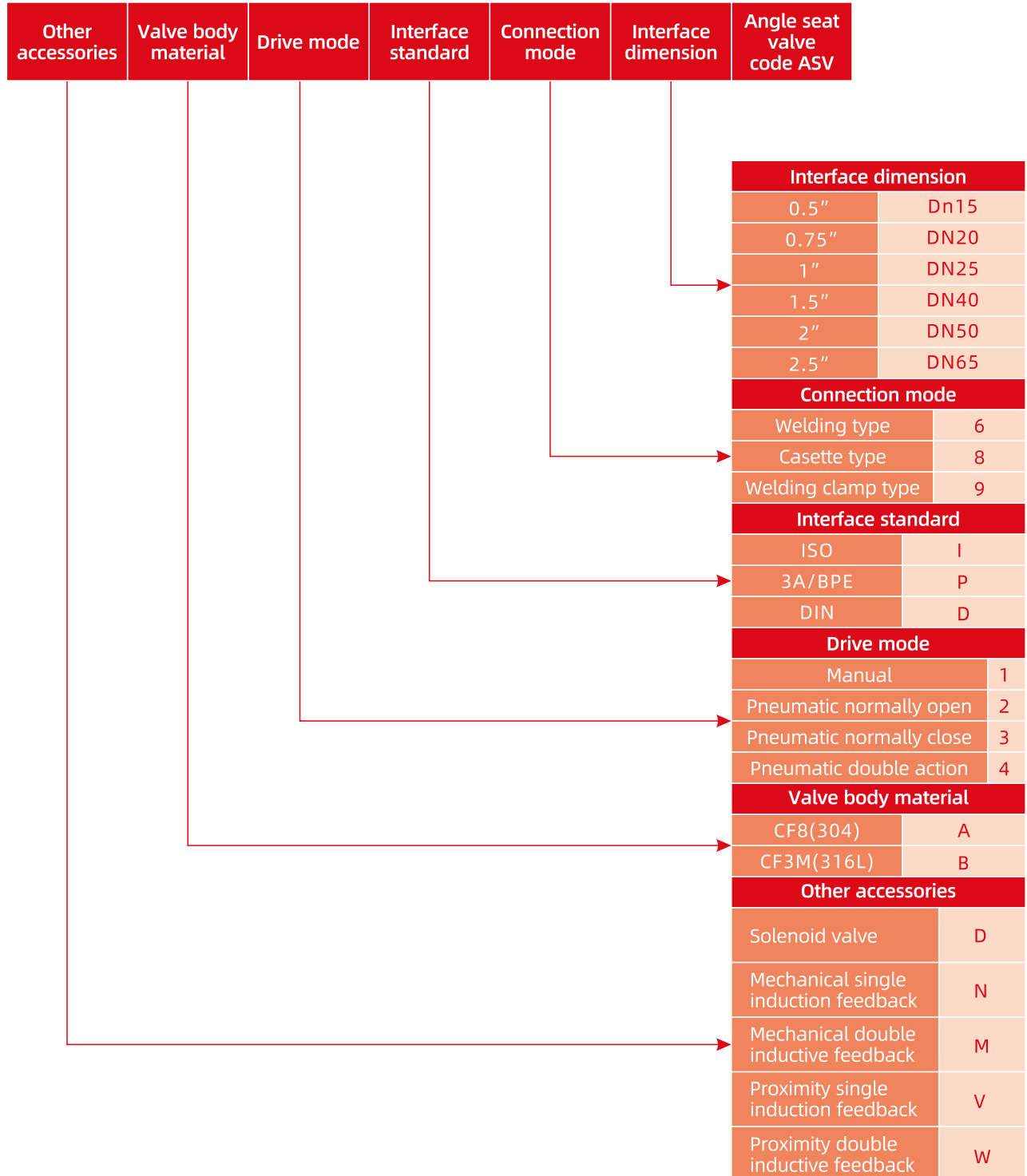


Pneumatic welding type - ASME BPE

Size	d	D	L	K	H
1/2"	9.4	12.7	120	85	65
3/4"	15.8	19.05	130	85	69
1"	22.1	25.4	140	85	86
1 1/2"	34.8	38.1	150	110	110
2"	47.5	50.8	180	110	120
2 1/2"	60.2	63.5	195		



## Sing-Tao Series-8 Sanitary Angle Seat Valve



# SING-TAO

QUALITY FIRST



☎ Tel.: +0512-6529 3059

✉ Email: [business@sing-tao.com.cn](mailto:business@sing-tao.com.cn)

📍 Address: Floor 5, Building 1, Genway Building 1, No. 188 Wangdun Road, Suzhou District, China (Jiangsu) Pilot Free Trade Zone