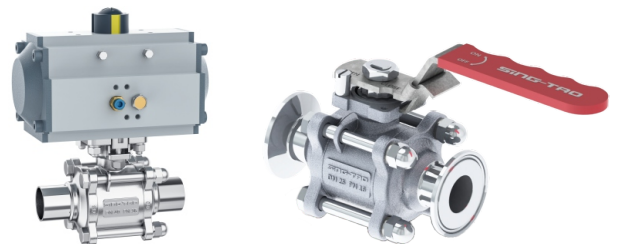


SING-TAO

SANITARY BALL VALVE

Sterile, Aseptic and Sanitary Valves



www.sing-tao.com.cn

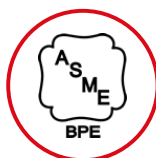
SING-TAO

Initiated by Dr. Dave Schmidt, a valve control expert, the innovation team is formed by the industry elites from Germany, Belgium and Hungary to jointly explore the wonderful pleasure of fluid control technology. We have successively established production factories in Malaysia and Indonesia, where there are rich mineral resources. With the help of Singapore's mature international trade market position, we have established a supply system integrating research and development, casting, processing and marketing.

We prefer to provide fluid control valves made of stainless steel and corrosion-resistant materials for applications in drinks, drugs and electronic semiconductor fields, including electric, pneumatic and manual valves: Steam drain valve, diaphragm valve, spherical valve, flap valve, mix-proof valve, check valve, angle stop valve, pipeline pressure maintaining valve, etc. We have full-time research and development engineers who conduct continuous improvement to every valve type, so that the products can better match the process requirements.

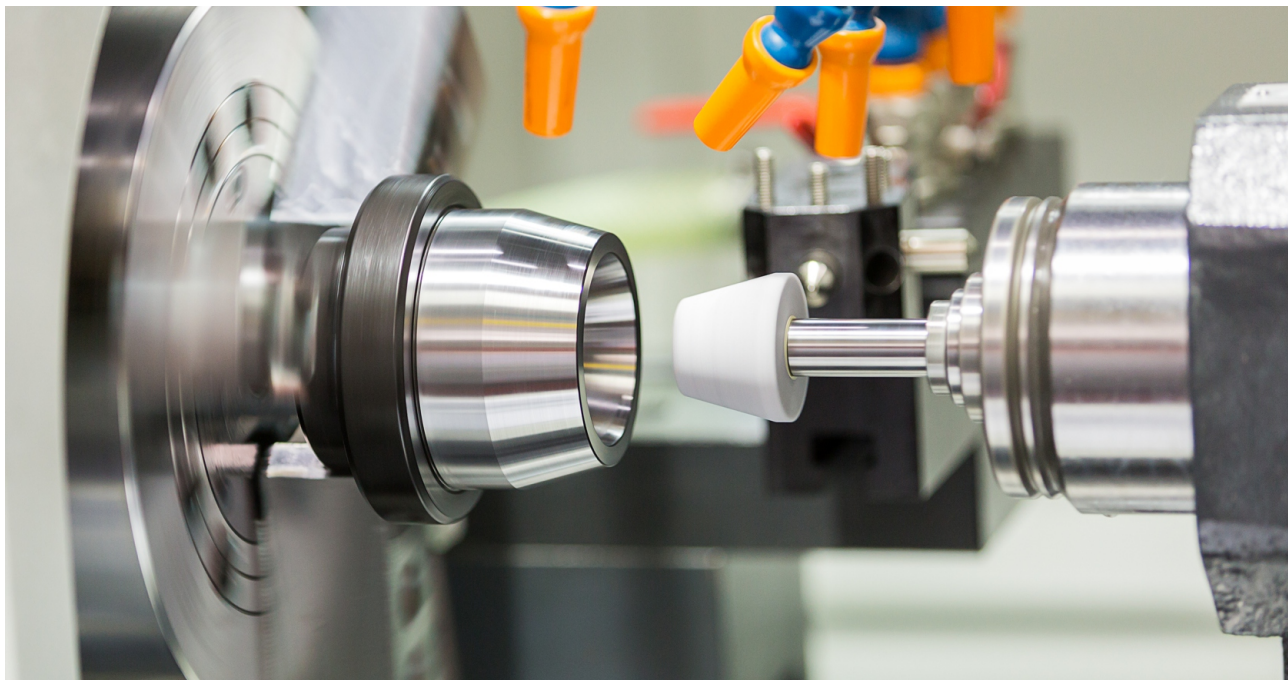
We always ensure that our products meet international industry standards and professional guidelines in quality control and best practices, including 3A, ASME BPE, FDA and SGS. Thanks to our continued commitment to product quality, we have been actively involved in EHEDG and FPSA, who have helped us become a leading valve supplier in the fluid control industry with their knowledge. For example: In order to reduce the risk of microbial contamination, we defined the structure and connection form of diaphragm valves used for cross-materials. The large flux check valve and plunger sterile tank bottom valve, etc. are designed ingeniously, becoming the industry leader.

Taking the Free Trade Agreement Upgrade Protocol signed between Singapore and China as the opportunity, we received the invitation to officially set up China's first "SING-TAO" valve representative office in the Singapore Industrial Park in Suzhou, China in 2022, to serve the Chinese market as the world's second largest economy, which will be the most important milestone in promoting the brand globalization of "SING-TAO" valve.



ENTERPRISE VISION

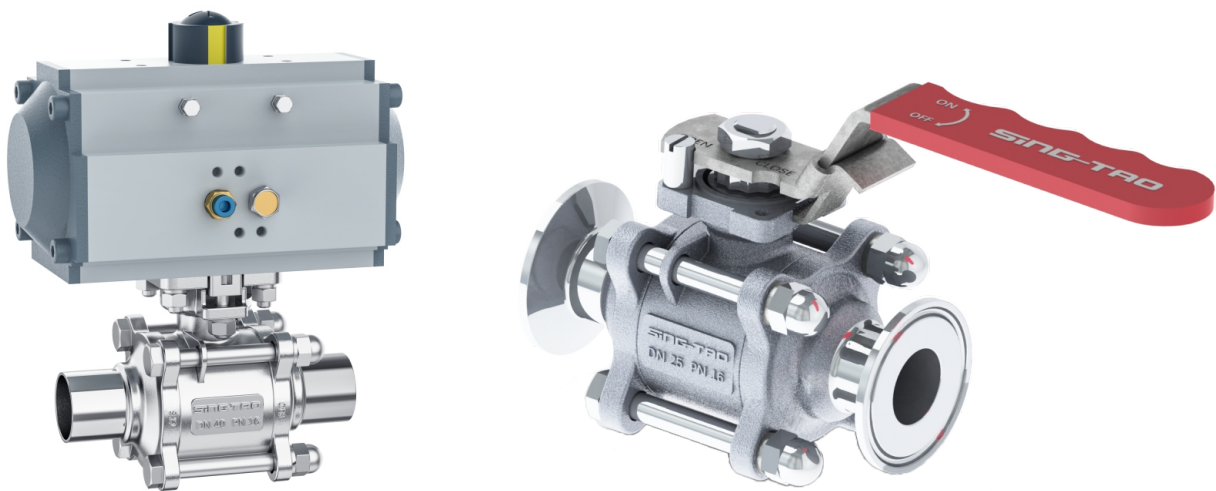
Let the experience exceed expectations



TRACEABILITY OF PRODUCTS

Each SING-TAO product is labeled with the brand name, material, dimension and traceable product number. Such information and customer purchase records are well documented and tracked in our system.

SANITARY BALL VALVE

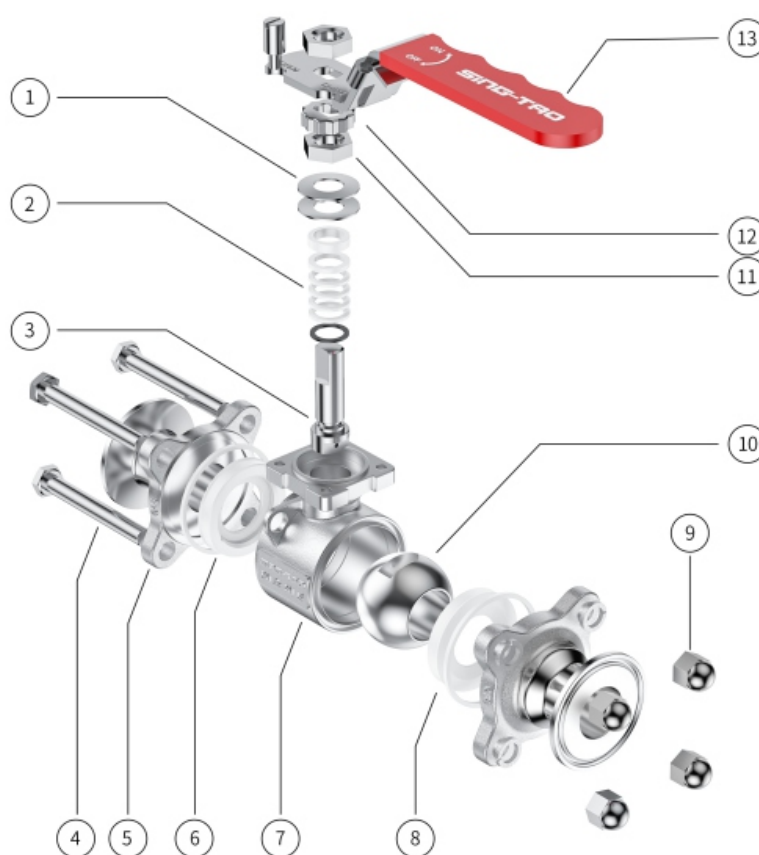


Application: Designed according to 3A and ASMEBPE standards, it is used in food and beverage, wine making, biopharmaceutical and other fields.

Features: Ball valve is popular because of its small fluid resistance, quick and convenient opening and closing, small dimension, good sealing, long service life, high safety and reliability, and ball passing and wire sweeping.

Dimension range: DN15-DN100(0.5"-4")	Seat material: PTFE
Working temperature: PTFE(TFM)-10°C ~ 150°C	Seat structure: Full-covered/half-covered
Pressure rating: 16bar	Body material: 304/316L
Driving mode: Manual/pneumatic	Interface form: Welding and clamping
Automatic control unit: Feedback device and locator	Standard: Comply with DIN, ISO standard and 3A, CE certification

- Steady engineering design
- Self pressure relief seat technology
- Long service life and long warranty period



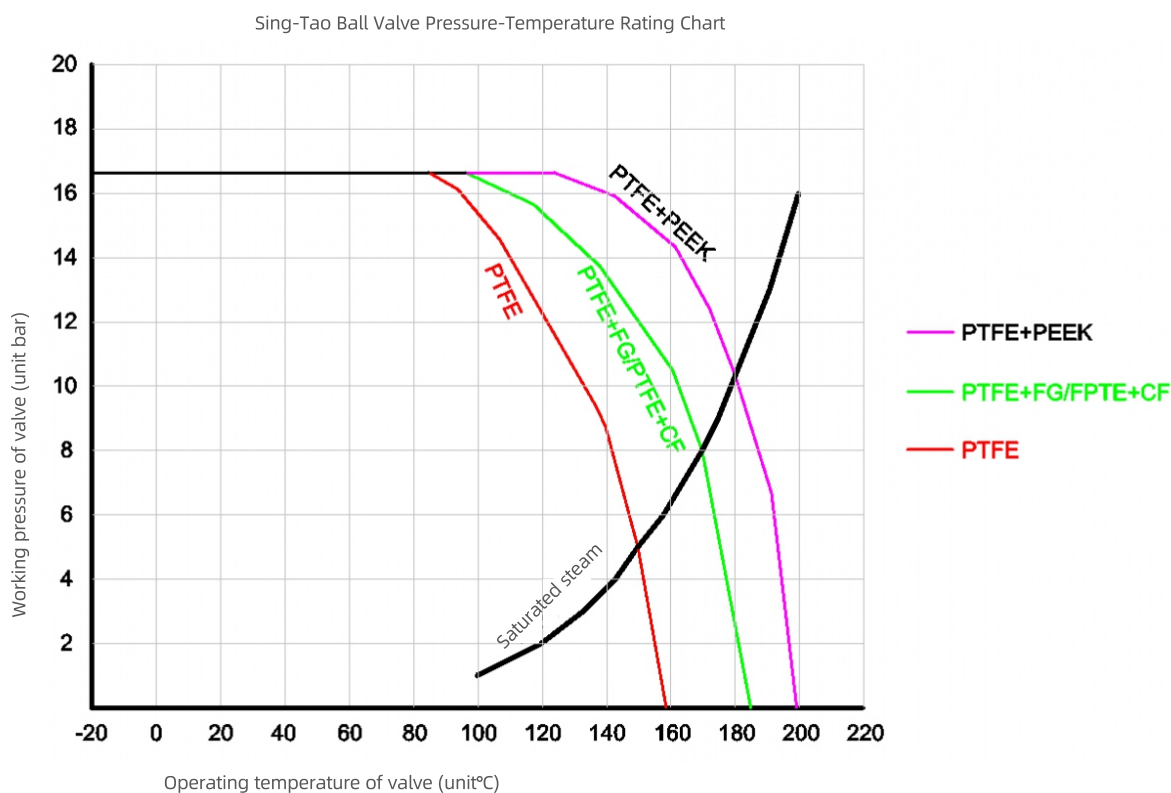
No.	Description	Material (EN)
1	Belleville spring	InconelX-750
2	Filler	PTFE
3	Valve stem	A182F304/F316L
4	Hexagonal head bolts	A193B8/B8M
5	Valve cover	A351CF8/CF3M
6	Sealing gasket	PTFE
7	Valve body	A351CF8/CF3M

No.	Description	Material (EN)
8	Seat	PTFE
9	Cap nut	A1948/8M
10	Sphere	A182F304/F316L
11	Hexagon nut	A1948/8M
12	Retaining washer	55304/316L
13	Handle	SS304+PE

Rated Pressure-temperature Values

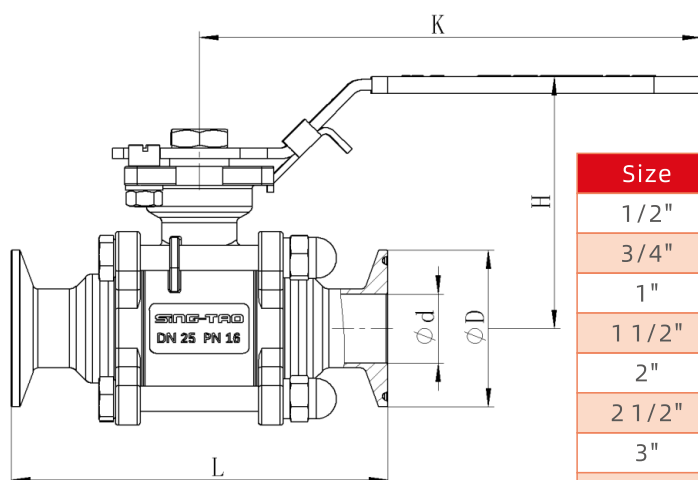
The main seal of ball valve is seat, and the performance of seat is one of the main factors that determine the service life of the valve. The seat materials of Sing-Tao Ball Valve are TFM and PTFE. Seat pressure-temperature rating is the maximum allowable working pressure expressed by gauge pressure at the specified temperature. When the temperature rises, the maximum allowable working pressure decreases.

When selecting the type, the appropriate seat material should be determined according to the operating temperature and working pressure of the valve with reference to the pressure-temperature chart.



Notes: ① It can be used for SIP (steam) with a temperature of 150°C, which is limited to PTFE sealing material and the valve is fully open. ② When welding ball valve is selected, please disassemble it before welding.

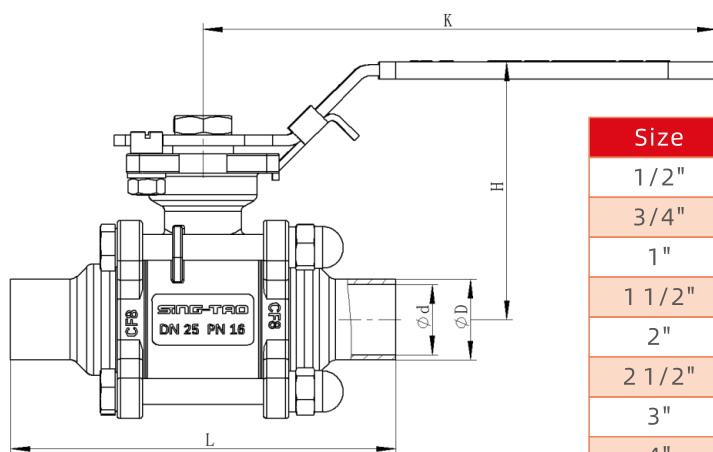
Manual clamping straight-through ball valve



Size	d	D	L	K	H
1/2"	9.4	25	90	135	65
3/4"	15.8	25	101	135	69
1"	22.1	34/50.4	121	155	86
1 1/2"	34.8	50.4	160	185	110
2"	47.5	63.9	165	185	120
2 1/2"	60.2	77.4	200	230	152
3"	72.9	90.9	230	345	162
4"	97.4	119	255	382	183

Dimension table of manual chuck
straight-through ball valve

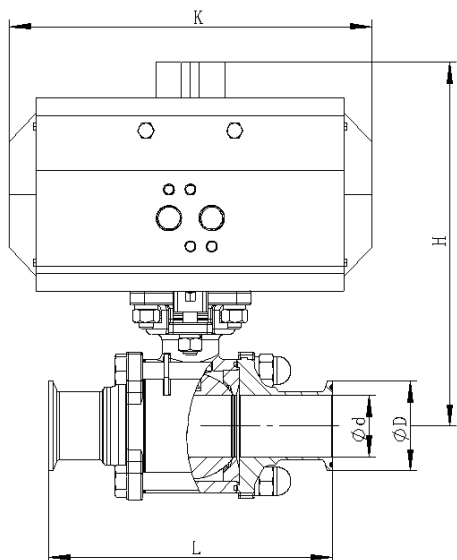
Manual welded straight-through ball valve



Size	d	D	L	K	H
1/2"	9.4	12.7	90	135	65
3/4"	15.8	19.05	101	135	69
1"	22.1	25.4	121	155	86
1 1/2"	34.8	38.1	160	185	110
2"	47.5	50.8	165	185	120
2 1/2"	60.2	63.5	200	230	152
3"	72.9	76.2	230	345	162
4"	97.4	101.6	255	382	183

Dimension table of manual welded
straight-through ball valve

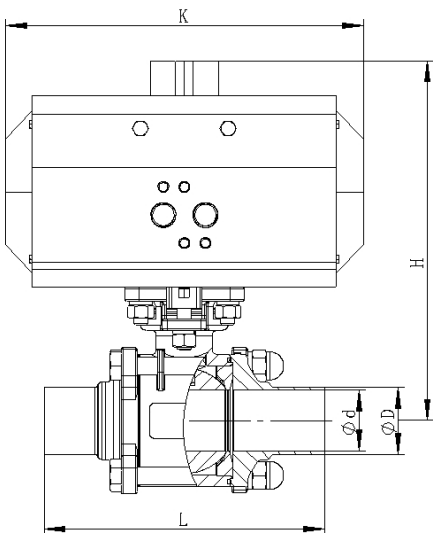
Pneumatic clamping straight-through ball valve



Size	d	D	L	K	H
1/2"	9.4	25	90	140	138
3/4"	15.8	25	101	158	156
1"	22.1	34/50.4	121	158	165
1 1/2"	34.8	50.4	160	248	223
2"	47.5	63.9	165	268	247
2 1/2"	60.2	77.4	200	268	296
3"	72.9	90.9	230	315	307
4"	97.4	119	255	345	341

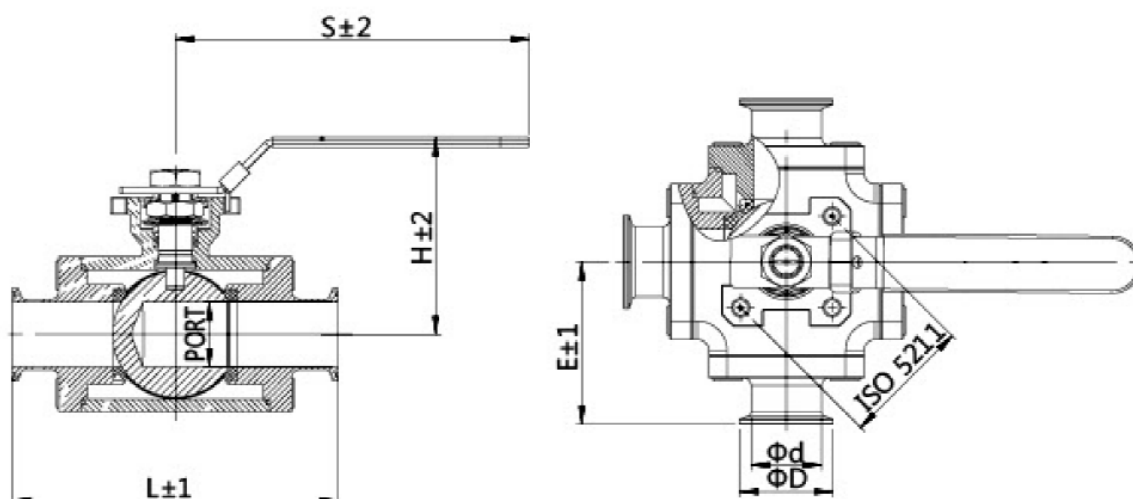
Dimension table of pneumatic chuck
straight-through ball valve

Pneumatic straight-through ball valve



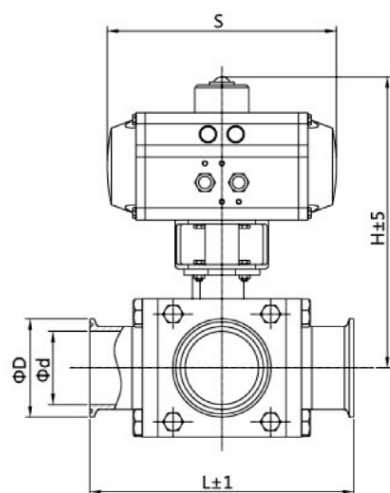
Size	d	D	L	K	H
1/2"	9.4	12.7	90	145	138
3/4"	15.8	19.05	101	145	156
1"	22.1	25.4	121	160	165
1 1/2"	34.8	38.1	160	185	223
2"	47.5	50.8	165	185	247
2 1/2"	60.2	63.5	200	230	296
3"	72.9	76.2	230	345	307
4"	97.4	101.6	255	382	341

Dimension table of pneumatic
straight-through ball valve



Dimension table of manual clamping three-way ball valve

Size	PORT	d	D	L	E	H	S
1/2"	9.4	12.7	25	110	74	89	187
3/4"	15.8	19.05	25	110	78	98	218
1"	22.1	25.4	34/50.4	130	84	102	218
1 1/2"	34.8	38.1	50.4	175	110	127	135
2"	47.5	50.8	63.9	220	122	139	252
2 1/2"	60.2	63.5	77.4	240	135	166	252
3"	72.9	76.2	90.9	290	146	170	252
4"	97.4	101.6	119	330	164	193	600



Size	d	D	L	H	S
1/2"	9.4	25	110	89	187
3/4"	15.8	25	110	98	218
1"	22.1	34/50.4	130	102	218
1 1/2"	34.8	50.4	175	127	135
2"	47.5	63.9	220	139	252
2 1/2"	60.2	77.4	240	166	252
3"	72.9	90.9	290	170	252
4"	97.4	119	330	193	600

Sing-Tao Series-5 Sanitary Ball Valve

Ball valve code B		Interface dimension	Connection mode	Interface standard	Structural form	Drive mode	Valve body material	Feed of seats	Seat style	Other accessories
Interface dimension										
0.5"	DN 15									
0.75"	DN 20									
1"	DN 25									
1.5"	DN 40									
2"	DN 50									
2.5"	DN 65									
3"	DN 80									
4"	DN100									
Connection mode										
Welding type	6									
Casette type	8									
Welding clamp type	9									
Interface standard										
ISO	I									
3A/BPE	P									
DIN	D									
Structural form										
Straight-through type	Z									
T-type three-way	T									
L-type three-way	L									
Drive mode										
Manual	1									
Pneumatic normally open	2									
Pneumatic normally close	3									
Pneumatic double action	4									
Valve body material										
CF8(304)	A									
CF3M(316L)	B									
Seat material										
PTFE	F									
PTFE+FG	G									
PTFE+CF	C									
PTFE+ PEEK	P									
Seat style										
Half-coverd type	F									
Full-covered type	Q									
Other accessories										
Solenoid valve	D									
Mechanical single induction feedback	N									
Mechanical double inductive feedback	M									
Proximity single induction feedback	V									
Proximity double inductive feedback	W									

SING-TAO

QUALITY FIRST



☎ Tel.: +0512-6529 3059

✉ Email: business@sing-tao.com.cn

📍 Address: Floor 5, Building 1, Genway Building 1, No. 188 Wangdun Road,
Suzhou District, China (Jiangsu) Pilot Free Trade Zone