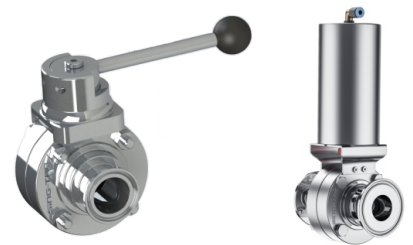


SING-TAO

SANITARY BUTTERFLY VALVE

Sterile, Aseptic and Sanitary Valves



www.sing-tao.com.cn

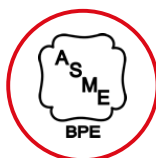
SING-TAO

Initiated by Dr. Dave Schmidt, a valve control expert, the innovation team is formed by the industry elites from Germany, Belgium and Hungary to jointly explore the wonderful pleasure of fluid control technology. We have successively established production factories in Malaysia and Indonesia, where there are rich mineral resources. With the help of Singapore's mature international trade market position, we have established a supply system integrating research and development, casting, processing and marketing.

We prefer to provide fluid control valves made of stainless steel and corrosion-resistant materials for applications in drinks, drugs and electronic semiconductor fields, including electric, pneumatic and manual valves: Steam drain valve, diaphragm valve, spherical valve, flap valve, mix-proof valve, check valve, angle stop valve, pipeline pressure maintaining valve, etc. We have full-time research and development engineers who conduct continuous improvement to every valve type, so that the products can better match the process requirements.

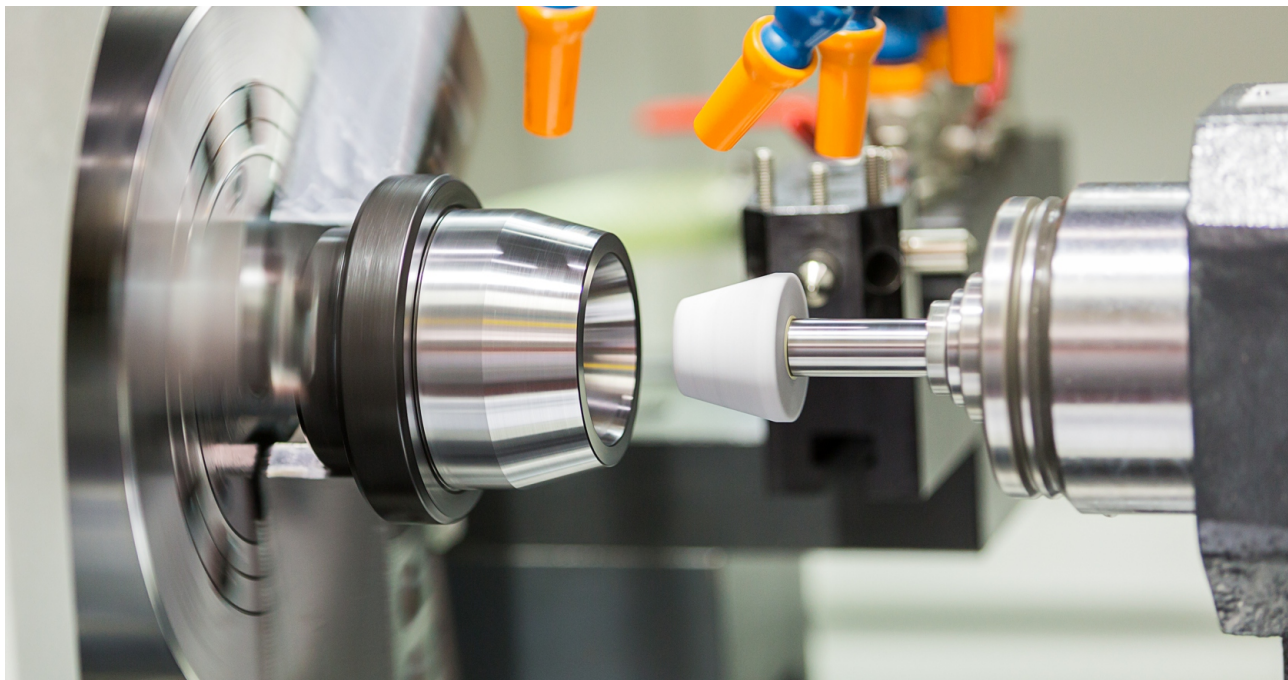
We always ensure that our products meet international industry standards and professional guidelines in quality control and best practices, including 3A, ASME BPE, FDA and SGS. Thanks to our continued commitment to product quality, we have been actively involved in EHEDG and FPSA, who have helped us become a leading valve supplier in the fluid control industry with their knowledge. For example: In order to reduce the risk of microbial contamination, we defined the structure and connection form of diaphragm valves used for cross-materials. The large flux check valve and plunger sterile tank bottom valve, etc. are designed ingeniously, becoming the industry leader.

Taking the Free Trade Agreement Upgrade Protocol signed between Singapore and China as the opportunity, we received the invitation to officially set up China's first "SING-TAO" valve representative office in the Singapore Industrial Park in Suzhou, China in 2022, to serve the Chinese market as the world's second largest economy, which will be the most important milestone in promoting the brand globalization of "SING-TAO" valve.



ENTERPRISE VISION

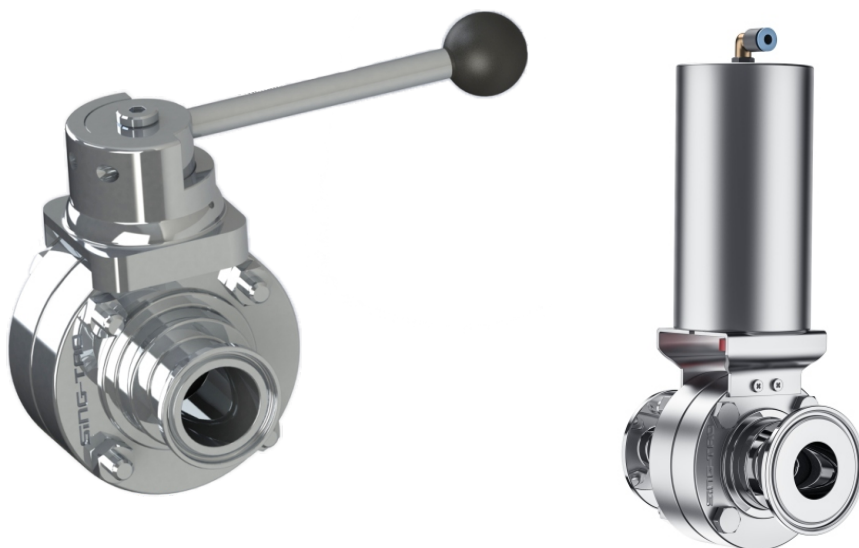
Let the experience exceed expectations



TRACEABILITY OF PRODUCTS

Each SING-TAO product is labeled with the brand name, material, dimension and traceable product number. Such information and customer purchase records are well documented and tracked in our system.

SANITARY BUTTERFLY VALVE

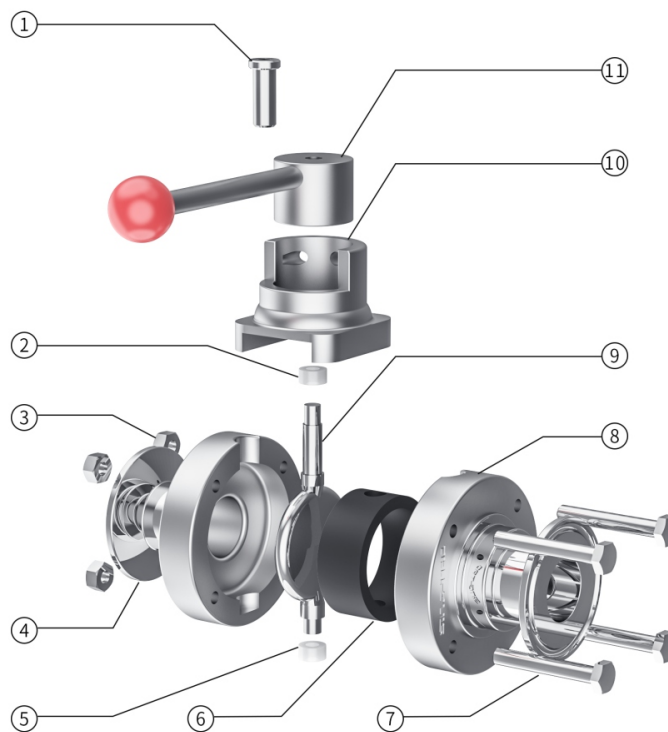


Application: Designed according to ISO, ASME BPE and DIN standards, it is used in food and beverage, brewing, biopharmaceutical and other fields.

Features: Stainless steel butterfly valve is simple in structure, small in dimension, light in weight, low in material consumption, small in installation dimension, small in driving torque, simple and quick to operate, and has good flow regulating function and closing and sealing characteristics. When it is fully opened, it has a small flow resistance, and when it is opened between about 15 and 70, it can perform sensitive flow control. Therefore, butterfly valves are widely used in the field of large-diameter regulation.

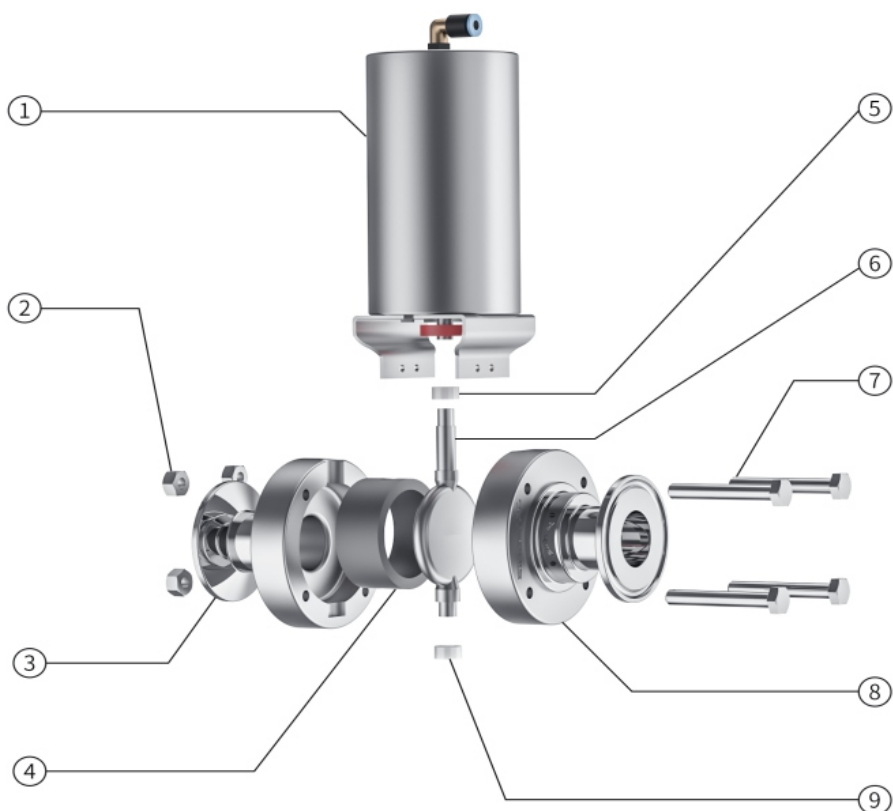
Dimension range: DN25-DN100(1"-4")	Automatic control unit: Feedback unit
Working temperature: EPDM-20°C-130°C	Seat material: EPDM, VITON, SILICON
VITON-20°C-150°C 、 SILICON-20°C-180°C	Body material: 304/316L
Pressure rating: 16bar	Interface form: Welding and clamping
Driving mode: Manual/pneumatic	Standard: Comply with EHEDG, TS and CE certification

- The valve stem is inlaid with nylon sleeve, which reduces the risk of valve stem wear and friction, thus making the valve open flexibly and easily.
- The diameter of the valve body is equal to the inner diameter of the pipeline, with large flow and low resistance, and no material accumulation.
- The handle adopts duckbill type or pull rod type, which can obtain larger operating torque.
- The opening and closing can be adjusted, and the operation is convenient.
- All valve bodies adopt detachable connection, with simple structure and convenient maintenance.



No.	Description	Material (EN)
1	Inner hexagon screw	A193B8/B8M
2	Wear-resistant ring	NYLON
3	Nut	A1948/8M
4	Left valve body	F304/F316L
5	Wear-resistant ring	NYLON
6	Sealing ring	EPDM, VITON, SILICON
7	Bolt	A193B8/B8M
8	Right valve body	F304/F316L
9	Butterfly plate	304/316L
10	Valve cover	F304/F316L
11	Handle	SS304

Sing-Tao Series-6 Sanitary Butterfly Valve

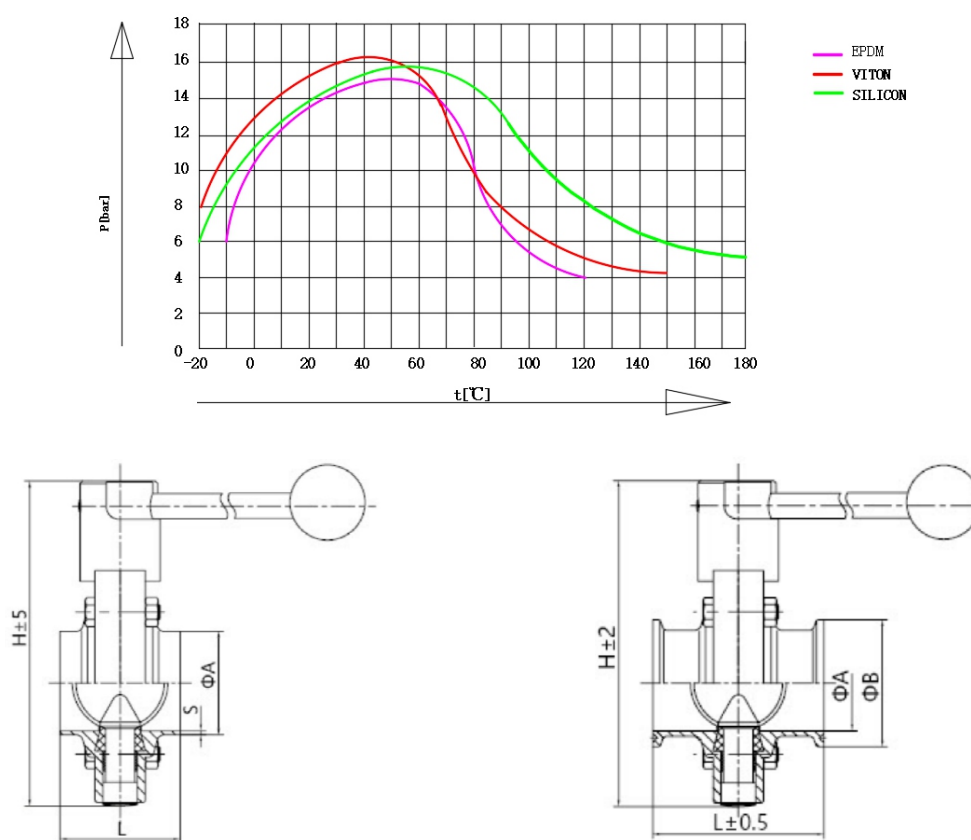


No.	Description	Material (EN)
1	Stainless steel pneumatic actuators	SS304
2	Nut	A1948/8M
3	Left valve body	F304/F316L
4	Sealing ring	EPDM, VITON, SILICON
5	Wear-resistant ring	NYLON
6	Butterfly plate	304/316L
7	Bolt	A193B8/B8M
8	Right valve body	F304/F316L
9	Wear-resistant ring	NYLON

Rated Pressure-temperature Values

Sing-Tao butterfly valve adopts rubber sealing ring, and EPDM and FPM (modified PTFE) are available. The service temperature-pressure rating of sealing ring determines the performance of the valve at different temperatures. Please refer to the following table when selecting the sealing ring material of butterfly valve:

The relationship between working pressure p and medium temperature t :



Manual welding type

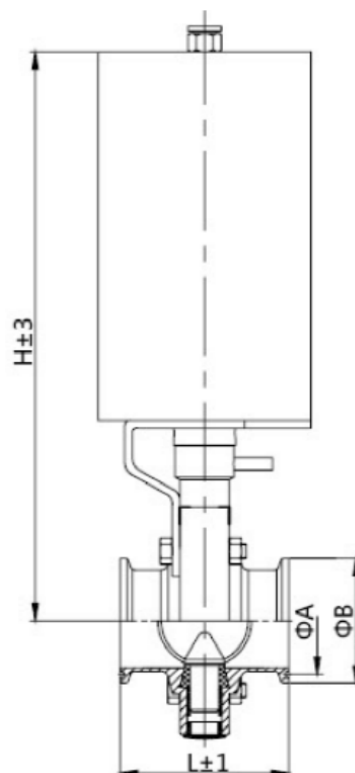
Size	A	S	L	H
1"	25.4	1.65	50	120
1.5"	38.1	1.65	50	130
2"	50.8	1.65	52	150
2.5"	63.5	1.65	56	170
3"	76.2	1.65	60	188
4"	101.6	2.11	75	208

Manual clamping type

Size	A	B	L	H
1"	22.1	50.5	66	120
1.5"	34.8	50.5	70	130
2"	47.5	64	70	150
2.5"	60.2	77.5	80	170
3"	72.9	91	80	188
4"	97.4	119	85	208

Pneumatic clamping type

Size	A	B	L	H
DN20	20	34	66	223
DN25	26	50.5	66	225
DN40	38	50.5	70	232
DN50	50	64	70	240
DN65	66	91	72	250
DN80	81	106	80	257
DN100	100	119	85	267



Pneumatic welding -ASME BPE

Size	A	S	L	H
1"	25.4	1.65	44	224
1.5"	38.1	1.65	44	228
2"	50.8	1.65	50	236
2.5"	63.5	1.65	50	244
3"	76.2	1.65	56	250
4"	101.6	2.11	60	267

Manual clamping type -ASME BPE/ISO

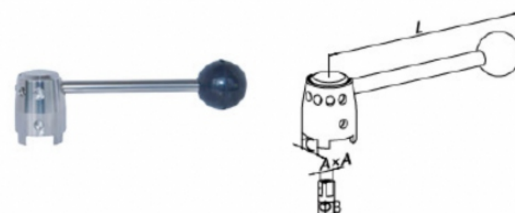
Size	A	B	L	H
1"	22.1	50.5	66	223
1.5"	34.8	50.5	70	228
2"	47.5	64	70	236
2.5"	60.2	77.5	80	244
3"	72.9	91	80	250
4"	97.4	119	85	267

Sanitary butterfly valve handle

Type A round head pull handle

Size		A	B	C	L
DN25~DN65	1.0"~3.0"	10*10	12.5	20	138
DN80~DN100	4.0"	10*10	12.5	20	160

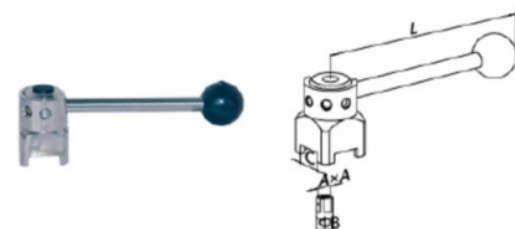
Accommodation mode: 2 positioning, 4 positioning; All butterfly valves can be assembled.



Type B square head pull handle

Size		A	B	C	L
DN25~DN65	1.0"~3.0"	10*10	12.5	20	140
DN80~DN100	4.0"	10*10	12.5	20	155

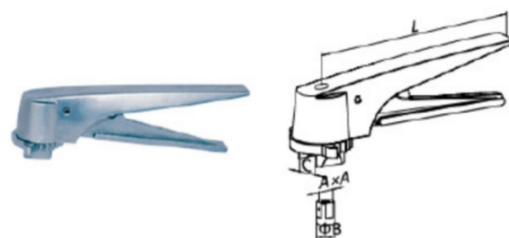
Accommodation mode: 2 positioning, 3 positioning and 4 positioning; All butterfly valves can be assembled.



Type C stainless steel multi position handle

Size		A	B	C	L
DN25~DN65	1.0"~2.5"	10*10	12.5	20	140
DN80~DN100	3.0"~4.0"	10*10	12.5	20	160

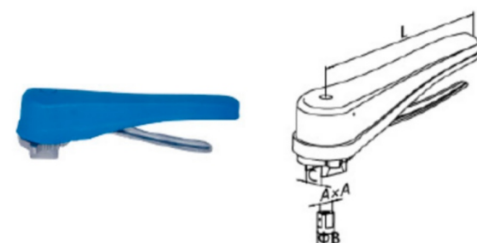
Accommodation mode: The opening dimension can be adjusted by 15° position, with 13 gears in total; All butterfly valves can be assembled.



Type D plastic multi position handle

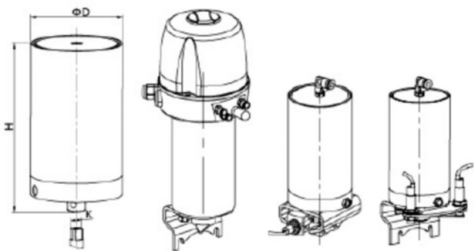
Size		A	B	C	L
DN25~DN65	1.0"~2.5"	10*10	12.5	20	145
DN80~DN100	3.0"~4.0"	10*10	12.5	20	165

Accommodation mode: The opening dimension can be adjusted by 15° position, with 13 gears in total; All butterfly valves can be assembled.



Stainless steel pneumatic actuators

Application: Vertical stainless steel pneumatic actuators is used for butterfly valves and other angular stroke valves to realize automatic control function. The valve positioning control can be realized by adding position sensor and intelligent controller. It is suitable for processes with high environmental requirements, such as food processing, beverage, fruit juice, beer, pharmacy and other fields.



D	H	K
86	172.5	8X8
86	172.5	10X10
86	172.5	11X11
114	244	11X11
114	244	14X14
133	295	11X11
133	295	14X14

Pneumatic accessories	Sealing material	Valve body material	Drive mode	Interface standard	Connection mode	Interface dimension	Butterfly valve code BV	
						Interface dimension		
						1/2"	DN 15	15
						3/4"	DN 20	20
						1"	DN 25	25
						1.5"	DN 40	40
						2"	DN 50	50
						2.5"	DN 65	65
						3"	DN 80	80
		4"	DN100	1A				
		Connection mode						
		Welding type	6					
		Cassette type	8					
	Interface standard							
	ISO	I						
	3A/BPE	P						
	DIN	D						
	Drive mode							
	Manual	1						
	Pneumatic normally open	2						
	Pneumatic normally close	3						
	Pneumatic double action	4						
	Valve body material							
	CF8(304)	A						
	CF3M(316L)	B						
Sealing material								
EPDM	E							
VITON	V							
SILICONE	S							
pneumatic accessories								
Solenoid valve	D							
Mechanical single induction feedback	N							
Mechanical double inductive feedback	M							
Proximity single induction feedback	V							
Proximity double inductive feedback	W							
Intelligent locator	C							

SING-TAO

QUALITY FIRST



☎ Tel.: +0512-6529 3059

✉ Email: business@sing-tao.com.cn

📍 Address: Floor 5, Building 1, Genway Building 1, No. 188 Wangdun Road,
Suzhou District, China (Jiangsu) Pilot Free Trade Zone